

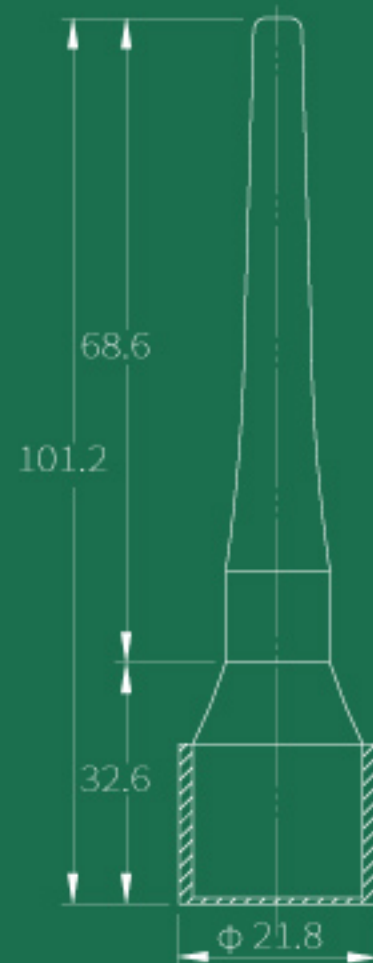
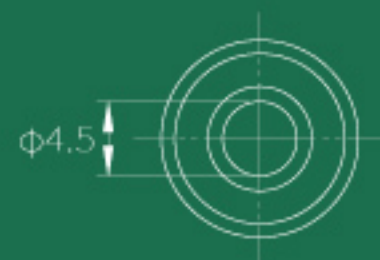
# BPEL01

**SIZE**  $\phi 21.8$  mm x 101.2 mm

**CAPACITY** 4.5 g

**MATERIAL** Cap: AS+ABS Bottle: PETG + BAMBO

# Lomei



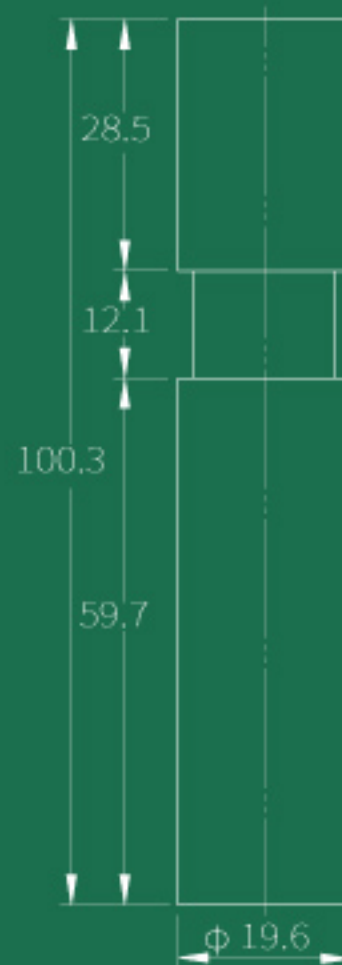
# BPLG01

**SIZE**  $\phi 19.6$  mm x 100.3 mm

**CAPACITY** 5 g

**MATERIAL** Cap: Bamboo/Stem: POM/Bottle: Bamboo & PETG

# Lomei



# BPMA01

**SIZE**  $\phi 20.25$  mm x 117.0 mm

**CAPACITY** 11 g

**MATERIAL** Cap: Bamboo / Ring: Alu / Stem: POM  
Bottle: Bamboo & PETG

# Lome

