

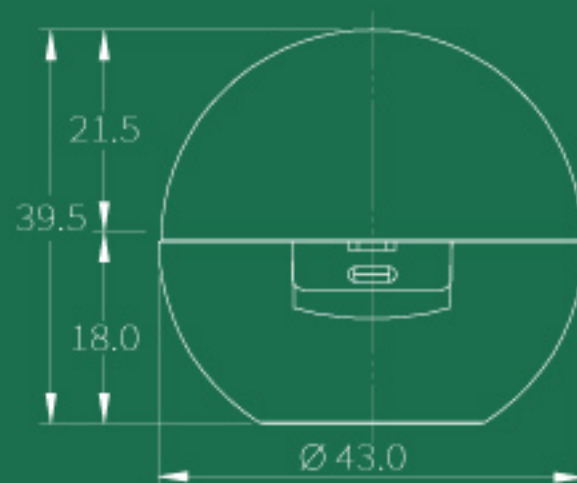
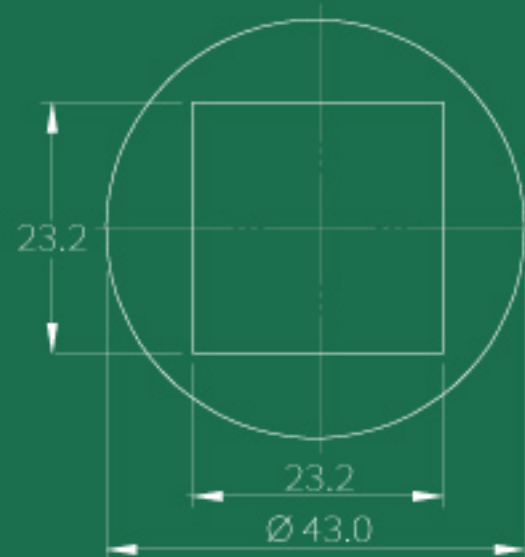
W15

SIZE $\phi 43.0$ mm \times 39.5 mm

CAPACITY Cap: 4g / Base: 4g

MATERIAL Cap & base: PMMA / Inner cap & base: ABS

Lomei



W21

SIZE $\phi 41.5 \text{ mm} \times 38.0 \text{ mm}$

CAPACITY Cap: 4g / Base: 4g

MATERIAL PMMA

Lomei

