

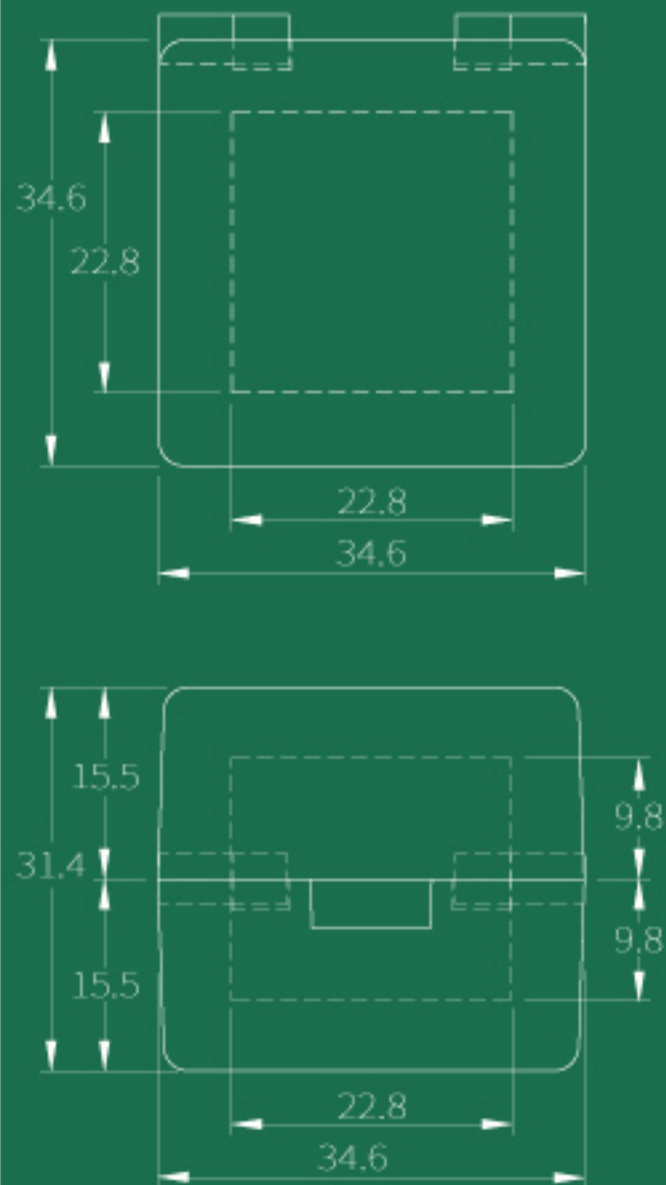
# W06

**SIZE** 34.4 mm × 34.4 mm × 31.0 mm

**CAPACITY** 4.5g

**MATERIAL** PMMA

# Lomei



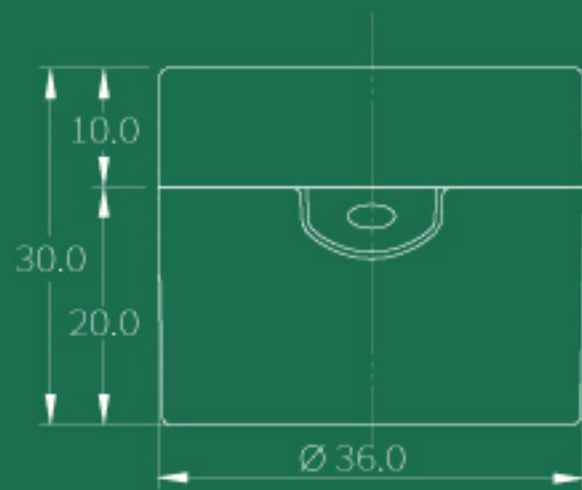
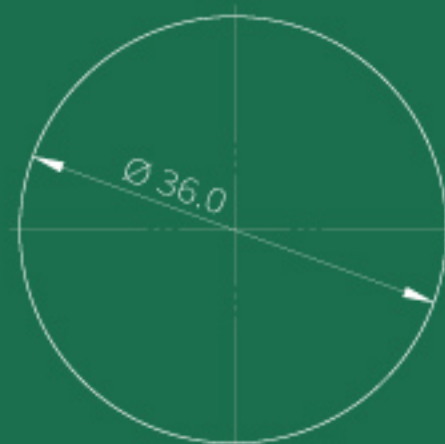
# W32A

**SIZE**  $\phi 36.0$  mm  $\times$  30.0 mm

**CAPACITY** 2.3g (Powder)

**MATERIAL** PMMA

# Lomei



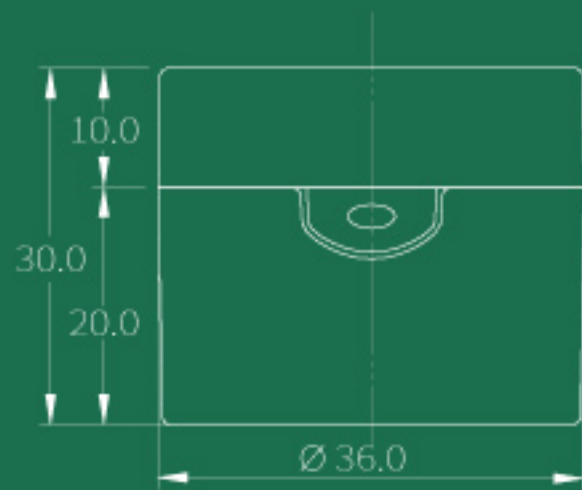
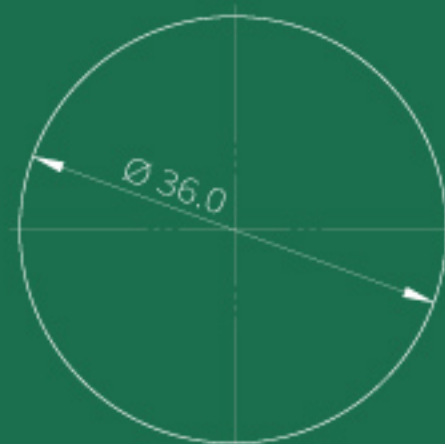
# W32B

**SIZE**  $\phi 36.0$  mm  $\times$  30.0 mm

**CAPACITY** 2.3g (Powder)

**MATERIAL** PMMA

# Lomei



# W32C

**SIZE**  $\phi 36.0$  mm  $\times$  30.3 mm

**CAPACITY** 2.3g (Powder)

**MATERIAL** Cap & Base: PMMA / Sifter: PE

# Lomei

