

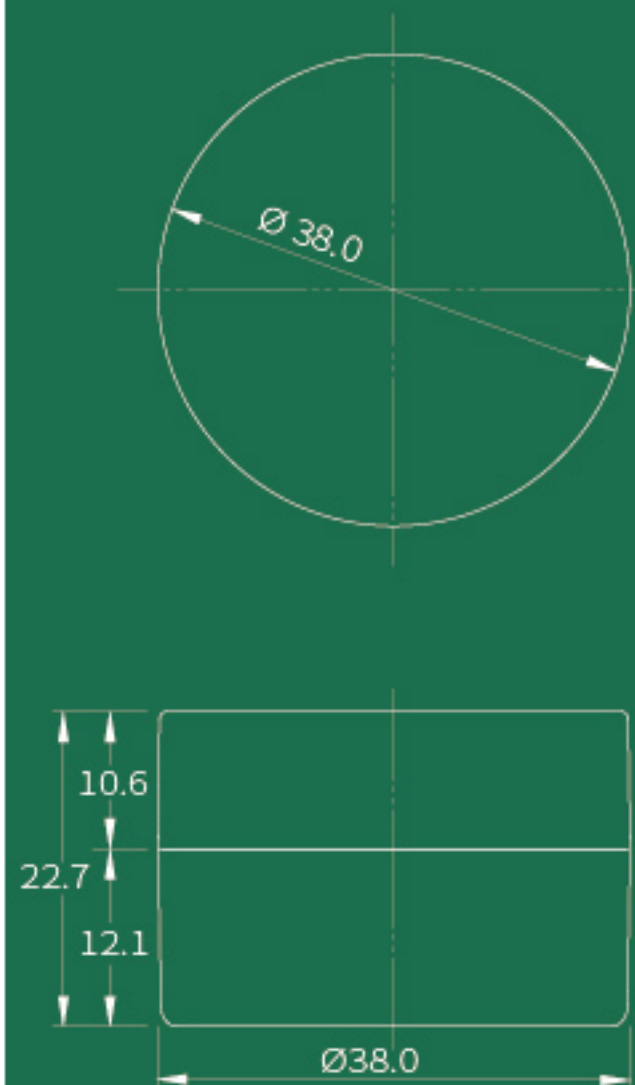
1038TKD

SIZE $\phi 38.0$ mm \times 22.7 mm

CAPACITY 2.1g (Powder) / 5g (Cream)

MATERIAL PS

Lomei



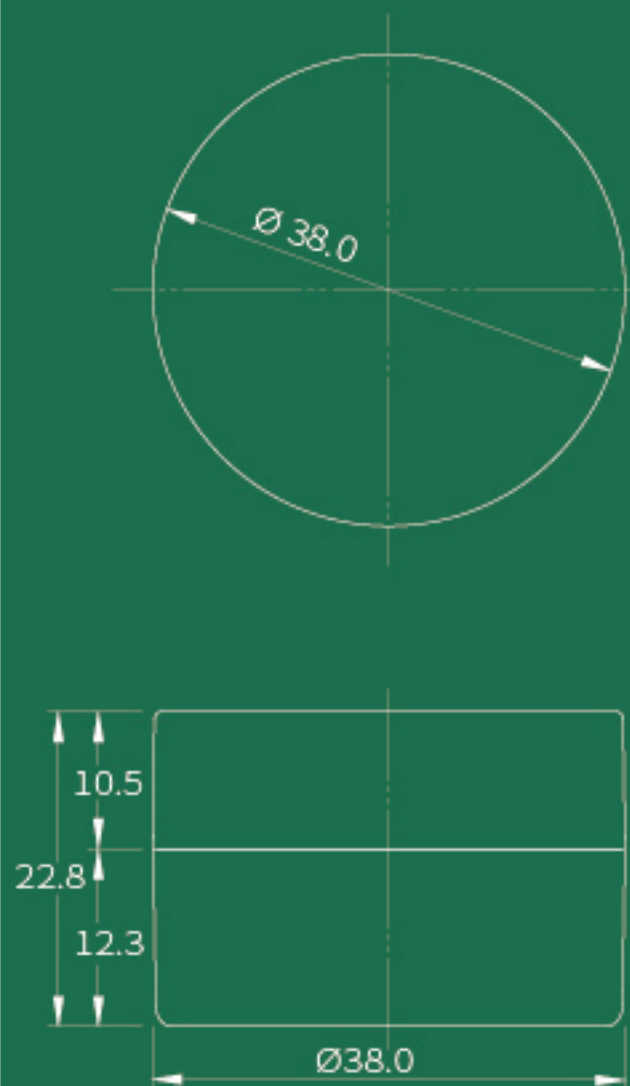
1038TK

SIZE $\phi 38.0 \text{ mm} \times 22.8 \text{ mm}$

CAPACITY 2.5g (Powder) / 10g (Cream)

MATERIAL Cap & Base: PS | Sifter: PP / PE

Lomei



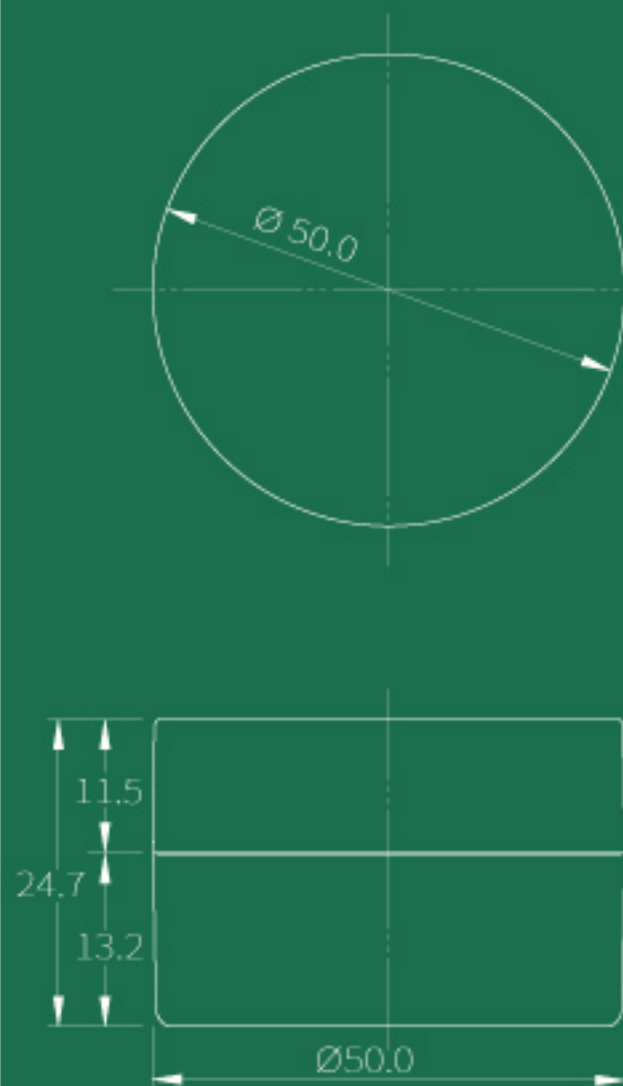
2050TK

SIZE $\phi 50.0 \text{ mm} \times 24.7 \text{ mm}$

CAPACITY 5g (Powder) / 20g (Cream)

MATERIAL Cap & Base: PS | Sifter: PP / PE

Lomei



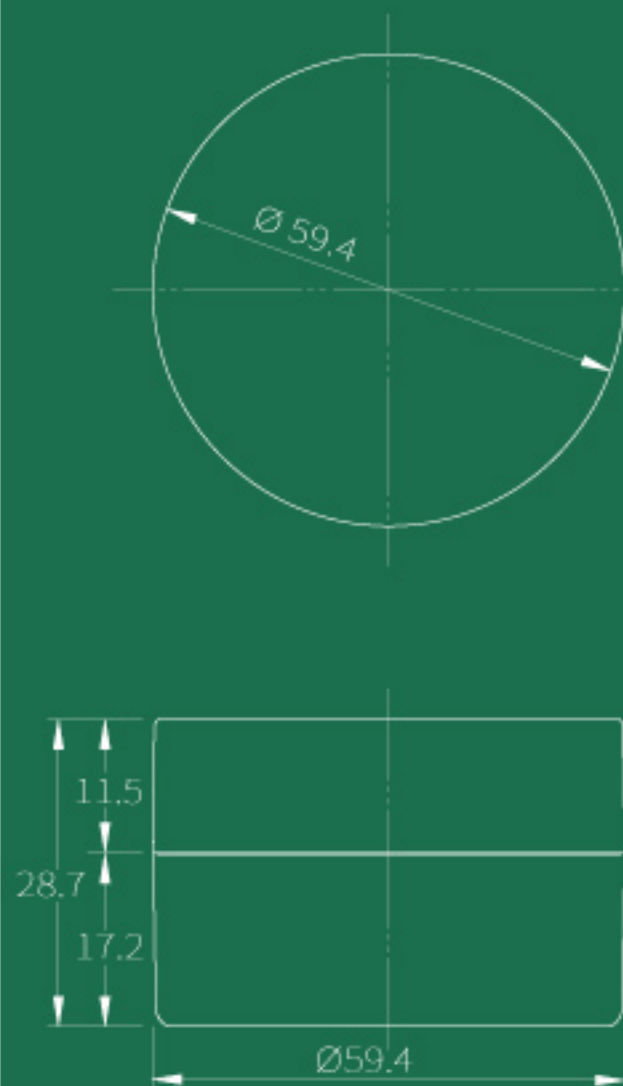
4558TK

SIZE $\phi 59.4 \text{ mm} \times 28.7 \text{ mm}$

CAPACITY 9g (Powder) / 45g (Cream)

MATERIAL Cap & Base: PS | Sifter: PP / PE

Lomei



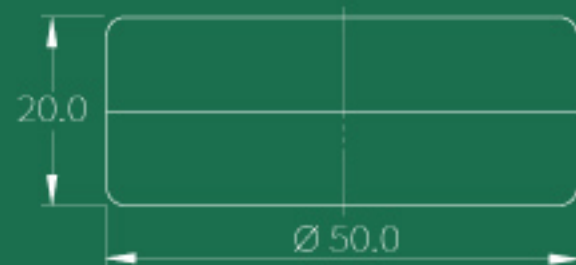
LB15A

SIZE $\phi 50.0 \text{ mm} \times 20.0 \text{ mm}$

CAPACITY 10g

MATERIAL Cap: PMMA+ABS | Base: PS / AS

Lomei



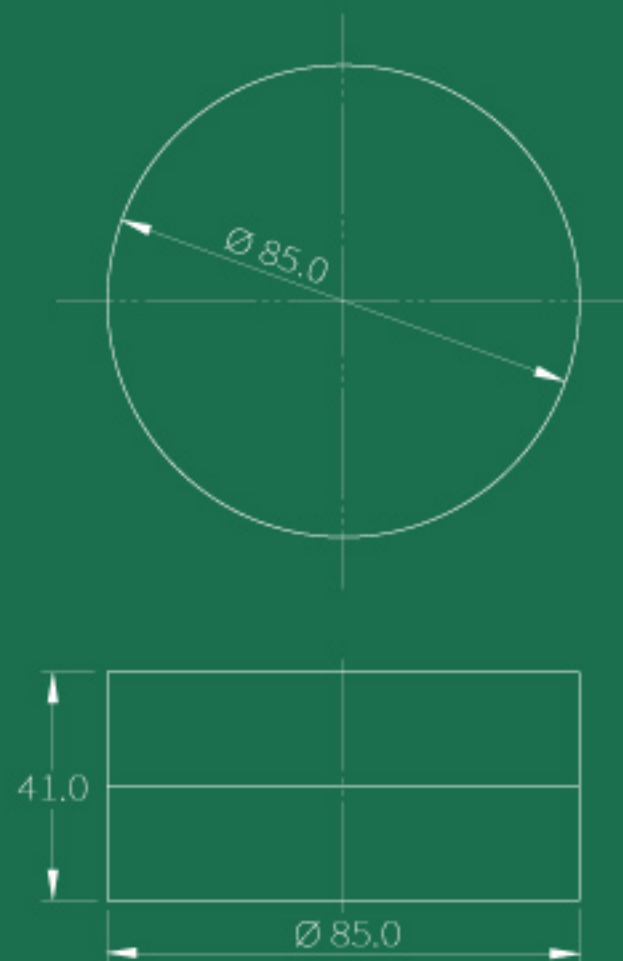
LB33A

SIZE $\phi 85.0$ mm \times 41.0 mm

CAPACITY 85ml / 20g (powder)

MATERIAL Cap: AS+ABS | Base: PS/PTEG | Sifter: PP

Lomei



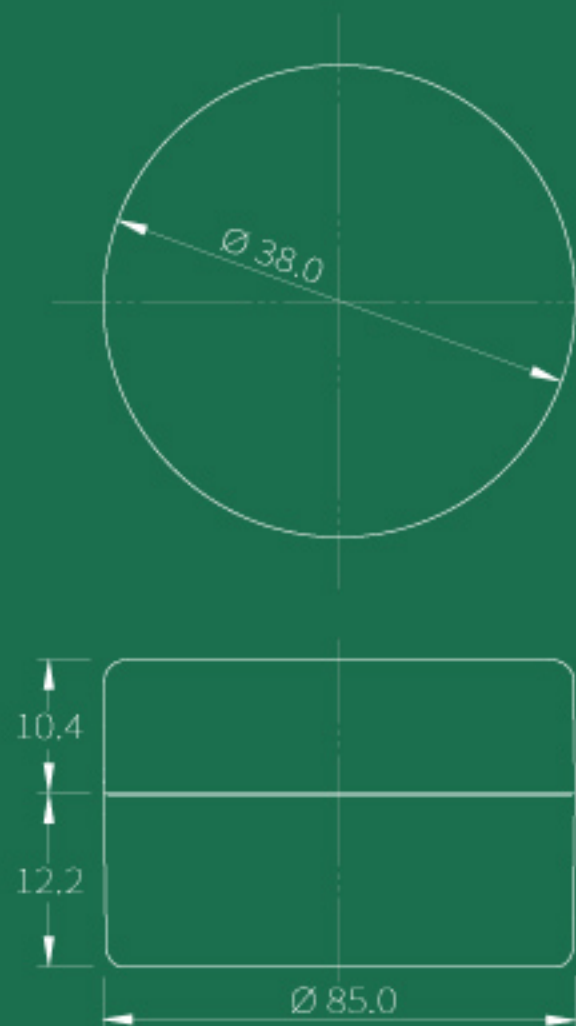
T1038

SIZE $\phi 38.0$ mm \times 22.8 mm

CAPACITY 2.5g (Powder) / 10g (Cream)

MATERIAL Cap & Base: PS | Sifter: PP / PE

Lomei



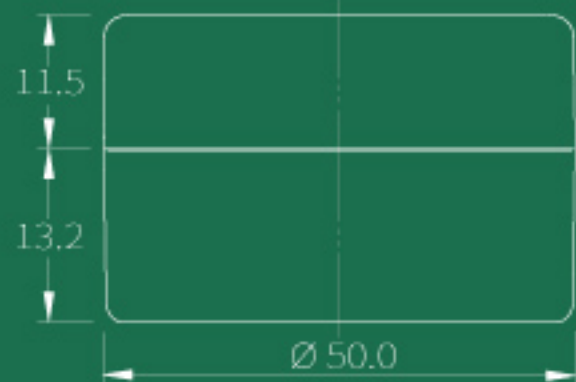
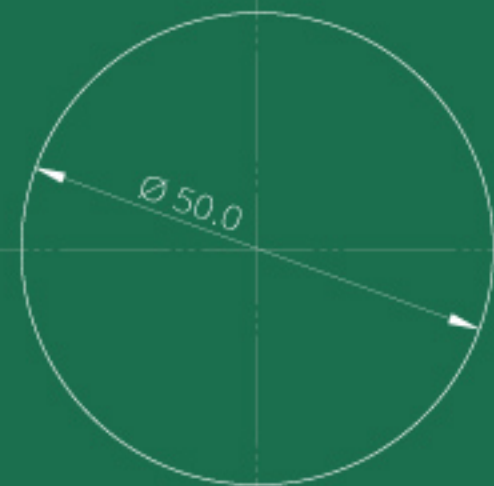
T2050

SIZE $\phi 50.0$ mm \times 24.7 mm

CAPACITY 5g (Powder) / 20g (Cream)

MATERIAL Cap & Base: PS | Sifter: PP / PE

Lomei



T4558

SIZE $\phi 59.4 \text{ mm} \times 28.7 \text{ mm}$

CAPACITY 9g (Powder) / 45g (Cream)

MATERIAL Cap & Base: PS | Sifter: PP / PE

Lomei

